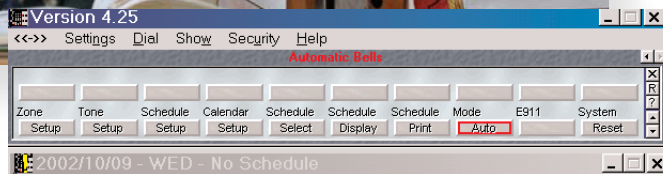


*Ultimate!*  
Software  
Products  
INCORPORATED

# Ultimate! OnTime4Class

for Windows<sup>®</sup>  
95, 98, NT, 2000, XP Pro

Software for keeping schools on schedule!



## Stay on Schedule!

Menu-driven options for setting up the schedule, zones and sounds to be used for the OnTime4Class software. Easy to use Windows<sup>®</sup> interface for schedule changes, viewing and printing the daily schedule. OnTime4Class software from *Ultimate!* for flexible schedules & security alerts.

# OnTime4Class

## Standard Features

### OnTime4Class SCHEDULE FEATURES

- ◆ Each class, grade, or school grouping can have a separate schedule, zone, and tone for the school bells – *reduces staff requirements and training costs while increasing flexibility*
- ◆ Schedule up to 18 months in advance – *provides for long range planning*
- ◆ Override current schedule for special events – *easy to change the schedule for a pep rally*
- ◆ Default daily, weekly, and weekend schedules – *set up in advance but provides flexibility if a change is required*
- ◆ Print the schedule as needed – *make sure staff is informed*
- ◆ Manual override – *Disable the automatic bell ringing schedule in case of an emergency*

### OnTime4Class PAGE ZONE FEATURES

- ◆ Up to 100 zones – *each can have its own schedule and sounds for school bells*
- ◆ A zone can be as small as one room – *customize the schedule for any teacher*
- ◆ Each zone can have a different tone – *reduces the confusion in common areas such as cafeterias and lobbies*
- ◆ Optional relay can ring existing “bells” – *existing hardware can be used with our up-to-date software*

### OnTime4Class TONE FEATURES

- ◆ Over 20 standard tones included – *be up and running within minutes*
- ◆ Drag and drop new tones – *add a new sound or tone*
- ◆ Each tone can be played to a different zone – *campuses that have grade school, middle school and high school can each have a unique sound*
- ◆ Re-name the tone – *makes it to easy to find or change if needed*
- ◆ Record your own tone – *the school song could be used to indicated time for an assembly*

### OnTime4Class ALERT FEATURES

- ◆ Preset alarms – *examples: intruder alert, tornado alert*
- ◆ Flexible alert indicators - *e-mail, pagers, audio, etc.*
- ◆ Optional Ultimate! Call Accounting 911 alert – *be informed real-time or after a call is placed to a 911 center.*

### OnTime4Class TECHNICAL REQUIREMENTS

- ◆ MS Windows® 95, 98, NT, 2000, XP Pro operating systems
- ◆ Computer with an available comm. port and sound card – *port and sound card are dedicated*
- ◆ Optional 232DRIOD - *RS-232 Digital Relay I/O for BELKIT on systems needing to ring a bell*
- ◆ Optional Digital telephone, RPCI-DI, and ECHO Card – *dedicated to the OnTime4Class kit and program*
- ◆ Optional interface with phone and paging systems
- ◆ Integration with TOSHIBA® telephone systems – *provides up to 100 zones, & digital phone operation*
- ◆ Optional equipment provides up to sixteen additional zones on non-TOSHIBA® systems – *allows for multiple campus applications*
- ◆ **OnTime4Class** includes atomic clock software to keep the computer clock on time. We recommend using atomic clocks in the classrooms. Try a web search for “atomic clocks”.

*Ultimate!*  
Software  
Products, Inc.

Website : [www.ultimatedemo.com](http://www.ultimatedemo.com)  
e-mail address : [sales@uspnet.com](mailto:sales@uspnet.com)  
Sales: (262) 789-9654  
Fax: (262) 789-9617